

\$269,900 - 708, 1410 1 Street Se, Calgary

MLS® #A2200790

\$269,900

1 Bedroom, 1.00 Bathroom, 679 sqft
Residential on 0.00 Acres

Beltline, Calgary, Alberta

Luxury Living in the Heart of Calgary - 18+
Building â€“ Welcome to Sasso!

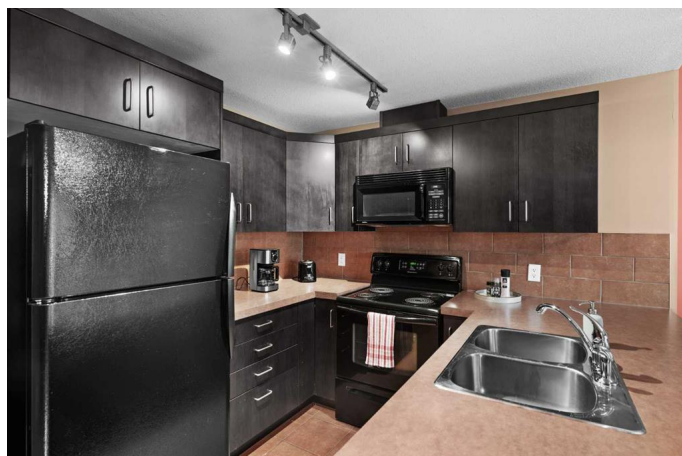
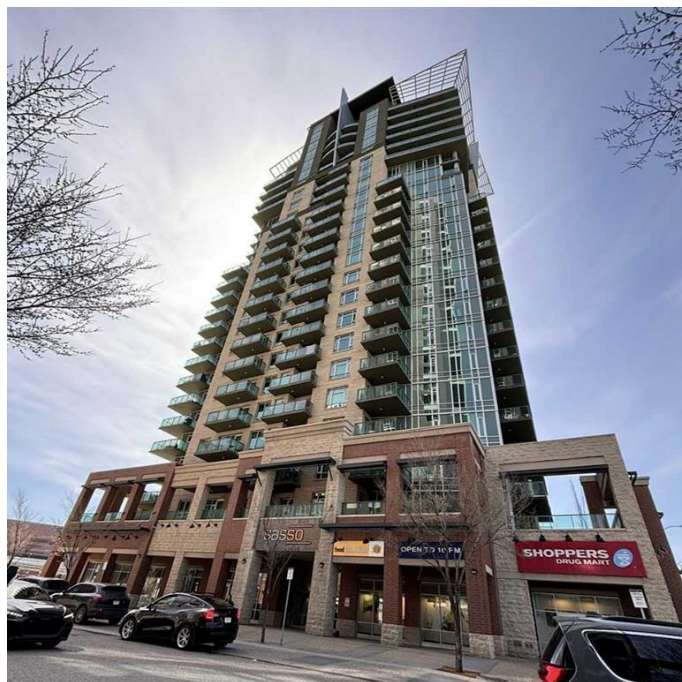
UNBELIEVABLE VALUE! 7TH FLOOR
CONDO WITH VIEWS FROM THE BALCONY
UNDER \$270,000!

This architecturally stunning, glass-wrapped
building is perfectly positioned between
Macleod Trail East and West, offering
unbeatable urban living. Just a short walk from
downtown and half a block from the C-Train,
every convenience is either in the building or
just steps away. Plus, enjoy surprising views of
the Saddledome and mountains right from
your own balcony!

Inside, this beautifully appointed unit stands
out from the rest, featuring granite countertops
throughout, 9ft ceilings, and stylish finishing
touches. With TITLED PARKING and
CONCIERGE SERVICE, this is more than
your average turnkey property.

The spacious one-bedroom offers ample living
space for entertaining, complemented by an
open-concept kitchen and a generous balcony
for city views. The large walk-through closet
provides plenty of storage, and the master
bedroom easily fits a king-sized bed with room
for nightstands. Additional in-suite storage in
the laundry room, along with an assigned
storage locker, gives you space for your bike,
skis, roller blades, wine collection, or whatever
your lifestyle demands!

Sassoâ€™s amenities are second to none: an
on-site theatre room, games room with a wet



bar, poker and pool tables, a large treed terrace, a fully equipped gym, and a hot tub for unwinding after a busy day. This is the vibrant city life youâ€™ve been waiting for, just steps from all the fun, sights, and sounds that make Calgary unique. ***PLEASE NOTE: all the furniture is for sale too at a very reasonable price***Donâ€™t miss outâ€™call to book your viewing today!

Built in 2006

Essential Information

MLS® #	A2200790
Price	\$269,900
Bedrooms	1
Bathrooms	1.00
Full Baths	1
Square Footage	679
Acres	0.00
Year Built	2006
Type	Residential
Sub-Type	Apartment
Style	Single Level Unit
Status	Active

Community Information

Address	708, 1410 1 Street Se
Subdivision	Beltline
City	Calgary
County	Calgary
Province	Alberta
Postal Code	T2G 5T7

Amenities

Amenities	Elevator(s), Fitness Center, Party Room, Secured Parking
Parking Spaces	1
Parking	Heated Garage, Parkade, Titled, Underground

Interior

Interior Features	See Remarks
Appliances	Dishwasher, Dryer, Microwave, Refrigerator, Stove(s), Washer
Heating	Boiler, Hot Water, Natural Gas
Cooling	Central Air
# of Stories	12

Exterior

Exterior Features	Courtyard, Lighting, Outdoor Grill, Storage, Barbecue
Roof	Tar/Gravel
Construction	Concrete, Stone

Additional Information

Date Listed	March 10th, 2025
Days on Market	17
Zoning	DC

Listing Details

Listing Office	RE/MAX First
----------------	--------------

Data is supplied by Pillar 9â„¢ MLSÂ® System. Pillar 9â„¢ is the owner of the copyright in its MLSÂ® System. Data is deemed reliable but is not guaranteed accurate by Pillar 9â„¢. The trademarks MLSÂ®, Multiple Listing ServiceÂ® and the associated logos are owned by The Canadian Real Estate Association (CREA) and identify the quality of services provided by real estate professionals who are members of CREA. Used under license.