

# \$849,900 - 2308 Palisade Drive Sw, Calgary

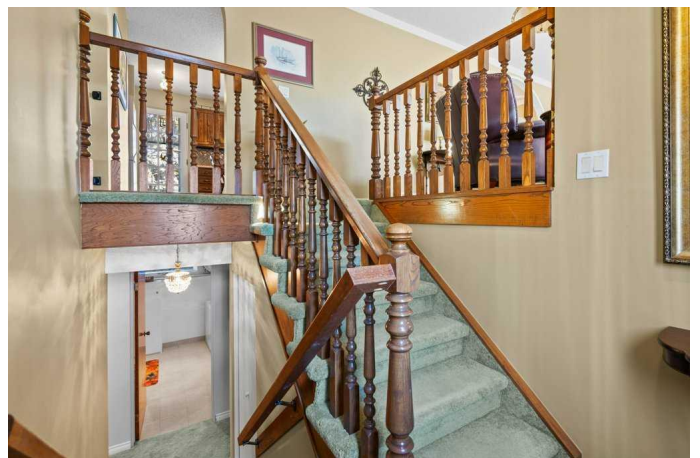
MLS® #A2190474

**\$849,900**

4 Bedroom, 3.00 Bathroom, 1,308 sqft  
Residential on 0.20 Acres

Palliser, Calgary, Alberta

Situated in the highly sought-after Palliser neighborhood, this charming and well maintained bi-level home offers over 1,300 sq ft on the main floor and an additional 1230 sq ft in the fully finished lower level. Located on a quiet cul-de-sac and surrounded by lush greenery, this residence is just minutes from all the amenities you need, including schools, shopping, dining, transportation, and the beautiful Glenmore Reservoir. Set on a unique, oversized lot with a massive, pie-shaped backyard, this property offers the perfect private oasis. The mature trees ensure complete privacy, creating a serene space ideal for children to play, hosting family gatherings, or simply enjoying the outdoors. The beautifully landscaped yard also includes a recently redone deck, perfect for relaxing summer nights. Additionally, the property features an oversized 25 ft long by 23 ft wide detached garage, providing ample space for parking, storage, or a workshop. Pride of ownership shines throughout this home, beginning with the charming curb appeal. An exposed aggregate walkway leads to the front entrance, setting the tone for the rest of the home. Inside, the home features a spacious and bright great room with large windows that flood the space with natural light. The dining area leads to a kitchen with updated laminate flooring, solid wood cabinets with ample cupboard space, and lots of counter space for prepping. The massive primary suite includes a 3 piece ensuite bathroom with a convenient



connection to the 3-piece main floor bathroom, which features a shower. A second generously sized bedroom rounds out the main floor. The lower level offers even more space, with a large rec room featuring a cozy fireplace, two additional bedrooms with walk-in closets, and another 3-piece bathroom. A laundry room with plenty of storage space and a utility room complete this level. For families, the proximity to excellent schools, recreation options, and outdoor spaces makes this home a true gem. Don't miss your chance to see this one, it's sure to capture your heart!

Built in 1968

### Essential Information

MLS® #	A2190474
Price	\$849,900
Bedrooms	4
Bathrooms	3.00
Full Baths	3
Square Footage	1,308
Acres	0.20
Year Built	1968
Type	Residential
Sub-Type	Detached
Style	Bi-Level
Status	Active

### Community Information

Address	2308 Palisade Drive Sw
Subdivision	Palliser
City	Calgary
County	Calgary
Province	Alberta
Postal Code	T2V 3V1

### Amenities

Parking Spaces	2
----------------	---

Parking Double Garage Detached  
# of Garages 2

### Interior

Interior Features Bar, Jetted Tub, Pantry  
Appliances Built-In Oven, Dishwasher, Dryer, Electric Cooktop, Garage Control(s), Refrigerator, Washer, Window Coverings  
Heating Forced Air, Natural Gas  
Cooling None  
Fireplace Yes  
# of Fireplaces 1  
Fireplaces Gas, Recreation Room, Wood Burning  
Has Basement Yes  
Basement Finished, Full

### Exterior

Exterior Features Lighting, Private Yard  
Lot Description Back Lane, Cul-De-Sac, Landscaped, Pie Shaped Lot, Private, Treed  
Roof Asphalt Shingle  
Construction Vinyl Siding, Wood Frame  
Foundation Poured Concrete

### Additional Information

Date Listed January 27th, 2025  
Days on Market 72  
Zoning R-CG

### Listing Details

Listing Office RE/MAX Landan Real Estate

Data is supplied by Pillar 9â„¢ MLSÂ® System. Pillar 9â„¢ is the owner of the copyright in its MLSÂ® System. Data is deemed reliable but is not guaranteed accurate by Pillar 9â„¢. The trademarks MLSÂ®, Multiple Listing ServiceÂ® and the associated logos are owned by The Canadian Real Estate Association (CREA) and identify the quality of services provided by real estate professionals who are members of CREA. Used under license.