

# \$1,279,900 - 122, 150 Lebel Crescent, Calgary

MLS® #A2189868

**\$1,279,900**

2 Bedroom, 3.00 Bathroom, 1,977 sqft

Residential on 0.00 Acres

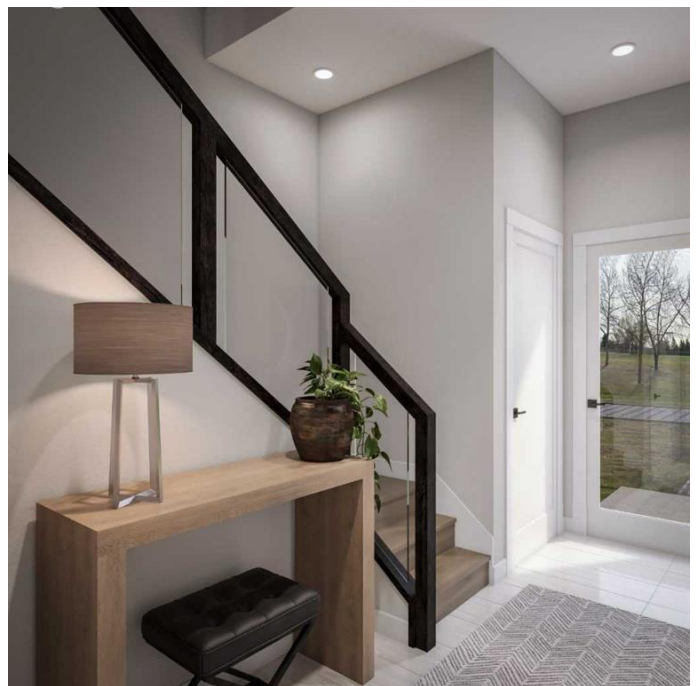
University District, Calgary, Alberta

Experience a new level of sophistication. GUILD townhomes are nestled in University District, a vibrant, walkable community filled with top-tier amenities. Your townhome boasts its own PRIVATE ELEVATOR for added convenience and accessibility, along with expansive ROOFTOP PATIO perfect for outdoor relaxation and entertaining. Your double-car garage provides both luxury and practicality. Inside, the meticulously designed interiors feature high-end finishes that perfectly complement a lock-and-leave lifestyle. SUBZERO & WOLF appliances, 7" Engineered oak hardwood flooring, 62" electric fireplace, and quartz or porcelain countertops with waterfall island edge . University District sets a new standard for urban living, blending LUXURY with CONVENIENCE. As one of the city's most visionary projects, it redefines community living and exceeds expectations at every turn. Photos are representative

Built in 2026

## Essential Information

MLS® #	A2189868
Price	\$1,279,900
Bedrooms	2
Bathrooms	3.00
Full Baths	2
Half Baths	1
Square Footage	1,977



Acres	0.00
Year Built	2026
Type	Residential
Sub-Type	Row/Townhouse
Style	3 Storey
Status	Active

### **Community Information**

Address	122, 150 Lebel Crescent
Subdivision	University District
City	Calgary
County	Calgary
Province	Alberta
Postal Code	T3A0B1

### **Amenities**

Amenities	None
Parking Spaces	2
Parking	Double Garage Attached
# of Garages	2

### **Interior**

Interior Features	High Ceilings, Double Vanity, Elevator, Kitchen Island, No Animal Home, No Smoking Home, Separate Entrance, Tankless Hot Water, Walk-In Closet(s)
Appliances	Dishwasher, Dryer, Microwave, Refrigerator, Washer, Gas Range, Range Hood
Heating	Forced Air
Cooling	Central Air
Fireplace	Yes
# of Fireplaces	1
Fireplaces	Decorative, Electric, Mantle
Basement	None

### **Exterior**

Exterior Features	Balcony, Private Entrance
Lot Description	Landscaped
Roof	See Remarks
Construction	Composite Siding, Wood Frame

Foundation                      Poured Concrete

**Additional Information**

Date Listed                      January 29th, 2025  
Days on Market                75  
Zoning                              R-G

**Listing Details**

Listing Office                    Bode Platform Inc.

Data is supplied by Pillar 9â„¢ MLS® System. Pillar 9â„¢ is the owner of the copyright in its MLS® System. Data is deemed reliable but is not guaranteed accurate by Pillar 9â„¢. The trademarks MLS®, Multiple Listing Service® and the associated logos are owned by The Canadian Real Estate Association (CREA) and identify the quality of services provided by real estate professionals who are members of CREA. Used under license.