

\$879,000 - N/A, Calgary

MLS® #A2187485

\$879,000

0 Bedroom, 0.00 Bathroom,
Commercial on 0.00 Acres

N/A, Calgary, Alberta

This is a unique chance to own a thriving retail store in a prime location, consistently generating over \$4 million in annual sales, with a remarkable \$4.3 million in gross revenue for 2024. The store, spanning 3,200 SF, is situated in a high-traffic plaza in South Calgary, directly facing Macleod Trail—one of the city's busiest roads, with over 100,000 vehicles passing by daily.

in Business for over 22 years and specializing in a wide range of electronic products, from new devices to repairs, the store has built a loyal customer base since its inception in 2002. This loyalty has contributed to steady growth year after year.

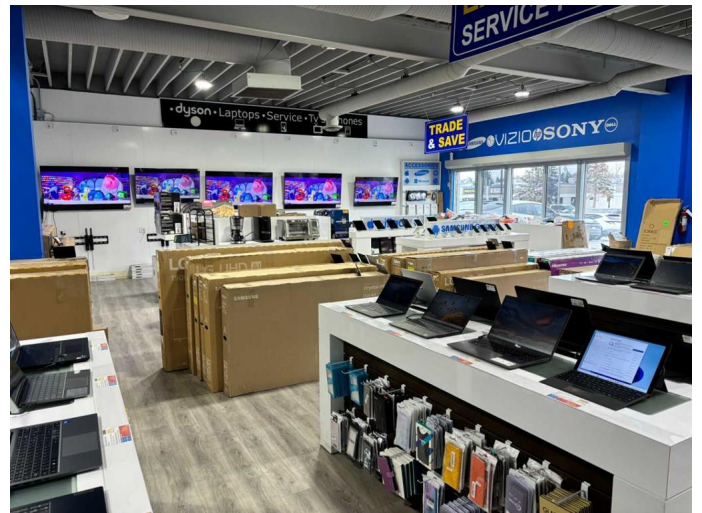
The business benefits from a seasoned management team that has been in place for over 8 years, with a dedicated staff ready to remain under new ownership. Additionally, this sale includes being part of the FRANCHISE from the Head Corporate office, ensuring continued access to exclusive products and a well-established supply chain. With a strong 20%+ margin on product sales and a reliable inventory system, this business is primed for ongoing success and expansion.

Built in 1988

Essential Information

MLS® # A2187485

Price \$879,000



Bathrooms	0.00
Acres	0.00
Year Built	1988
Type	Commercial
Sub-Type	Retail
Status	Active

Community Information

Address	N/A
Subdivision	N/A
City	Calgary
County	Calgary
Province	Alberta

Additional Information

Date Listed	January 14th, 2025
Days on Market	94

Listing Details

Listing Office	Century 21 Bravo Realty
----------------	-------------------------

Data is supplied by Pillar 9â„¢ MLSÂ® System. Pillar 9â„¢ is the owner of the copyright in its MLSÂ® System. Data is deemed reliable but is not guaranteed accurate by Pillar 9â„¢. The trademarks MLSÂ®, Multiple Listing ServiceÂ® and the associated logos are owned by The Canadian Real Estate Association (CREA) and identify the quality of services provided by real estate professionals who are members of CREA. Used under license.