

## \$176,000 - 141 Roseland Village, Edmonton

MLS® #E4432685

**\$176,000**

3 Bedroom, 1.50 Bathroom, 1,164 sqft

Condo / Townhouse on 0.00 Acres

Northmount (Edmonton), Edmonton, AB

Huge Potential! Nestled in the heart of Northmount, this charming home eagerly awaits your vision and creativity. The cozy main floor features a kitchen, dining room, and a welcoming living space - perfect for crafting new memories and transforming this space into your ideal sanctuary. A half bath on the main floor creates effortless everyday living. Upstairs, 3 bedrooms promise restful nights and the full bath holds the potential for refreshing mornings and tranquil evenings. Use your personal touch and a dash of innovation to reveal its true potential. Beyond the walls of this home, the community of Northmount beckons with the promise of a vibrant lifestyle. A long-standing, active community league with an outdoor rink offers a strong sense of community spirit. Convenience is at your door, with 3 schools, a wide array of local amenities and family-friendly parks to keep everyone active. Shopping is extremely convenient and access to transit and major roadways makes commuting a breeze!

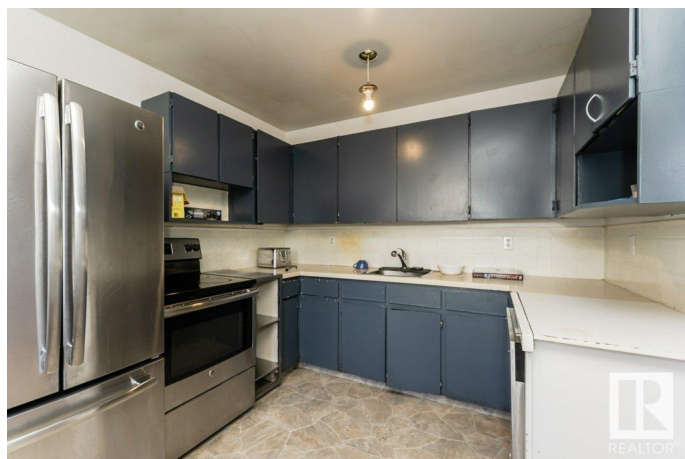
Built in 1969

### Essential Information

MLS® # E4432685

Price \$176,000

Bedrooms 3



Bathrooms	1.50
Full Baths	1
Half Baths	1
Square Footage	1,164
Acres	0.00
Year Built	1969
Type	Condo / Townhouse
Sub-Type	Townhouse
Style	2 Storey
Status	Active

### Community Information

Address	141 Roseland Village
Area	Edmonton
Subdivision	Northmount (Edmonton)
City	Edmonton
County	ALBERTA
Province	AB
Postal Code	T5E 5R6

### Amenities

Amenities	No Smoking Home
Parking	Stall

### Interior

Appliances	Dishwasher-Built-In, Refrigerator, Stove-Electric
Heating	Forced Air-1, Natural Gas
Stories	2
Has Basement	Yes
Basement	Full, Unfinished

### Exterior

Exterior	Wood, Brick, Stucco
Exterior Features	Fenced, Landscaped, Low Maintenance Landscape, Playground Nearby, Public Transportation, Schools, Shopping Nearby
Roof	Asphalt Shingles
Construction	Wood, Brick, Stucco
Foundation	Concrete Perimeter

### Additional Information

Date Listed	April 24th, 2025
Days on Market	3
Zoning	Zone 02
Condo Fee	\$300

DATA IS DEEMED RELIABLE BUT IS NOT GUARANTEED ACCURATE BY THE REALTORS® ASSOCIATION OF EDMONTON. COPYRIGHT 2025 BY THE REALTORS® ASSOCIATION OF EDMONTON. ALL RIGHTS RESERVED. Trademarks are owned or controlled by the Canadian Real Estate Association (CREA) and identify real estate professionals who are members of CREA (REALTOR®, REALTORS®) and/or the quality of services they provide (MLS®, Multiple Listing Service®)

Listing information last updated on April 27th, 2025 at 12:47am MDT