

Courtesy Of John M Taggart Of Town and City Realty

\$325,000 - 10421 150 Street, Edmonton

MLS® #E4431570

\$325,000

3 Bedroom, 1.50 Bathroom, 1,389 sqft
Single Family on 0.00 Acres

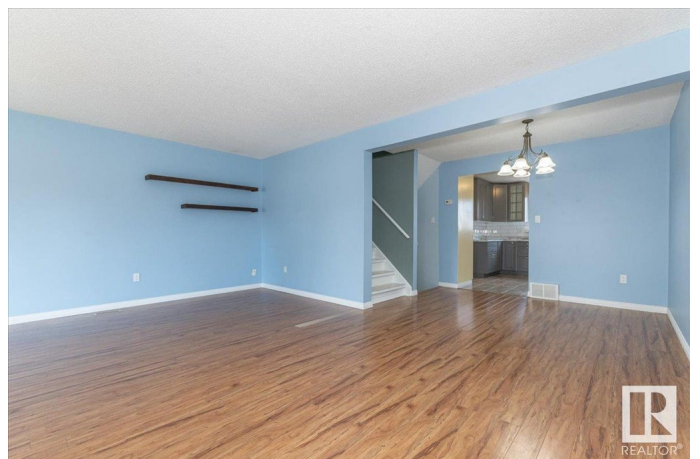
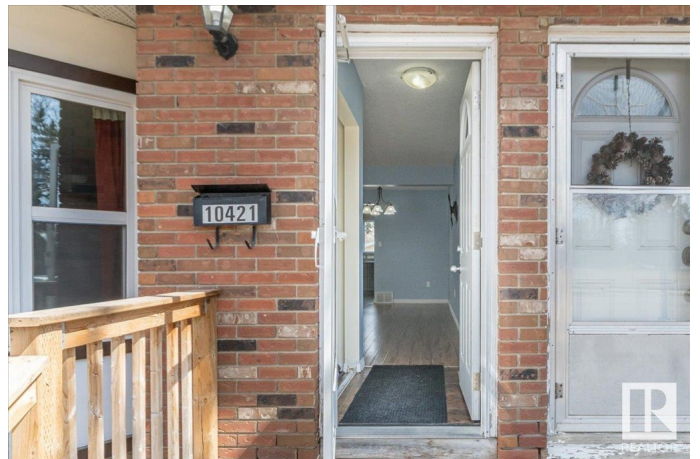
Canora, Edmonton, AB

This three bedroom half duplex has a fantastic location with the front facing Canora park AND backing on to a green space. The home has many big ticket updates including; vinyl windows, new roof, updated flooring on both levels, an updated kitchen with new cabinets and newer stainless steel appliances and updated bathrooms. The basement is finished with a very large recreation room and a large storage utility laundry room. Outside there is a large front deck and yard to easily watch the kids play in the excellent park across the street. The park features soccer fields, a playground, a skateboard park, a skating rink and basketball hoops. The back yard is also spacious and fenced and there is an oversized single detached garage with an extra paved parking area on the driveway leading to the back alley that faces the green belt. This home is located close to schools, amenities and future LRT. With no condo fees and a very affordable price this home is perfect for families and investors.

Built in 1974

Essential Information

MLS® #	E4431570
Price	\$325,000
Bedrooms	3



Bathrooms	1.50
Full Baths	1
Half Baths	1
Square Footage	1,389
Acres	0.00
Year Built	1974
Type	Single Family
Sub-Type	Half Duplex
Style	2 Storey
Status	Active

Community Information

Address	10421 150 Street
Area	Edmonton
Subdivision	Canora
City	Edmonton
County	ALBERTA
Province	AB
Postal Code	T5P 4P1

Amenities

Amenities	Off Street Parking, No Smoking Home, Vinyl Windows
Parking	Single Garage Detached

Interior

Appliances	Dishwasher-Built-In, Dryer, Refrigerator, Stove-Electric, Washer
Heating	Forced Air-1, Natural Gas
Stories	2
Has Basement	Yes
Basement	Full, Finished

Exterior

Exterior	Wood, Brick, Stucco
Exterior Features	Back Lane, Backs Onto Park/Trees, Landscaped, Park/Reserve, Playground Nearby, Schools, See Remarks
Roof	Asphalt Shingles
Construction	Wood, Brick, Stucco
Foundation	Concrete Perimeter

Additional Information

Date Listed April 17th, 2025

Days on Market 10

Zoning Zone 21

DATA IS DEEMED RELIABLE BUT IS NOT GUARANTEED ACCURATE BY THE REALTORS® ASSOCIATION OF EDMONTON. COPYRIGHT 2025 BY THE REALTORS® ASSOCIATION OF EDMONTON. ALL RIGHTS RESERVED. Trademarks are owned or controlled by the Canadian Real Estate Association (CREA) and identify real estate professionals who are members of CREA (REALTOR®, REALTORS®) and/or the quality of services they provide (MLS®, Multiple Listing Service®)

Listing information last updated on April 27th, 2025 at 1:32pm MDT