

## \$369,000 - N/A, Edmonton

MLS® #E4431183

**\$369,000**

5 Bedroom, 3.00 Bathroom, 1,035 sqft  
Single Family on 0.00 Acres

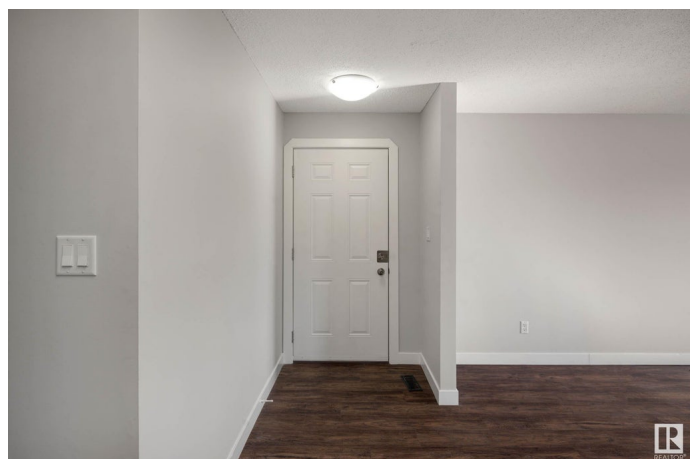
Lago Lindo, Edmonton, AB

Cute as a button!! Welcome home to this 5 BEDROOM, 3 FULL BATH, FULLY FINISHED & RENOVATED 4 level split located in Lago Lindo! Enter into the main floor greeting you with a huge kitchen including a farm house sink, quartz countertops, & loads of high end cabinetry. Completing the main floor is a large living room/dining room combination with a picturesque front window. Up a few stairs to the upper level featuring a great sized Primary bedroom, 2nd & 3rd bedrooms & a 4pc main bath. Down to the 3 level where you will find the ample sized 4th & 5th bedrooms & another 3 pc bath. Need more room? No problem! The BASEMENT boasts a Family Room with WETBAR & again, a 3 pc bath. UPGRADES include QUARTZ COUNTERTOPS/ FRESHLY PAINTED/VINYL PLANK/ UPGRADED BATHROOMS/MAIN FLOOR WINDOWS/FRONT SIDING - 2025, KITCHEN - 2020, SHINGLES/HOT WATER TANK 2021. Close to Schools (mere blocks away), Parks, ETS, Shopping, Military Base (CFB) & the Henday, nothing left to do but move in! Welcome Home! \*Some photos virtually staged.\*

Built in 1982

### Essential Information

MLS® # E4431183



Price	\$369,000
Bedrooms	5
Bathrooms	3.00
Full Baths	3
Square Footage	1,035
Acres	0.00
Year Built	1982
Type	Single Family
Sub-Type	Detached Single Family
Style	4 Level Split
Status	Active

### Community Information

Address	N/A
Area	Edmonton
Subdivision	Lago Lindo
City	Edmonton
County	ALBERTA
Province	AB
Postal Code	T5Z 2K7

### Amenities

Amenities	No Animal Home, No Smoking Home
Parking	Front Drive Access

### Interior

Appliances	Dishwasher-Built-In, Dryer, Hood Fan, Oven-Microwave, Storage Shed, Stove-Electric, Washer, Refrigerators-Two
Heating	Forced Air-1, Natural Gas
Stories	4
Has Basement	Yes
Basement	Full, Finished

### Exterior

Exterior	Wood, Stucco, Vinyl
Exterior Features	Fenced, Golf Nearby, Landscaped, Playground Nearby, Public Transportation, Schools, Shopping Nearby
Roof	Asphalt Shingles
Construction	Wood, Stucco, Vinyl

Foundation                      Concrete Perimeter

**School Information**

Elementary                      Lago Lindo/Bishop Greschuk  
Middle                              Dickensfield/Cardinal Leg  
High                                 Q. Elizabeth/ArchB O'Leary

**Additional Information**

Date Listed                      April 16th, 2025  
Days on Market                11  
Zoning                              Zone 28

DATA IS DEEMED RELIABLE BUT IS NOT GUARANTEED ACCURATE BY THE REALTORS® ASSOCIATION OF EDMONTON. COPYRIGHT 2025 BY THE REALTORS® ASSOCIATION OF EDMONTON. ALL RIGHTS RESERVED.Trademarks are owned or controlled by the Canadian Real Estate Association (CREA) and identify real estate professionals who are members of CREA (REALTOR®, REALTORS®) and/or the quality of services they provide (MLS®, Multiple Listing Service®)  
Listing information last updated on April 27th, 2025 at 9:17am MDT