

## \$474,900 - 4215 Allan Link Link, Edmonton

MLS® #E4427863

### \$474,900

3 Bedroom, 2.50 Bathroom, 1,500 sqft  
Single Family on 0.00 Acres

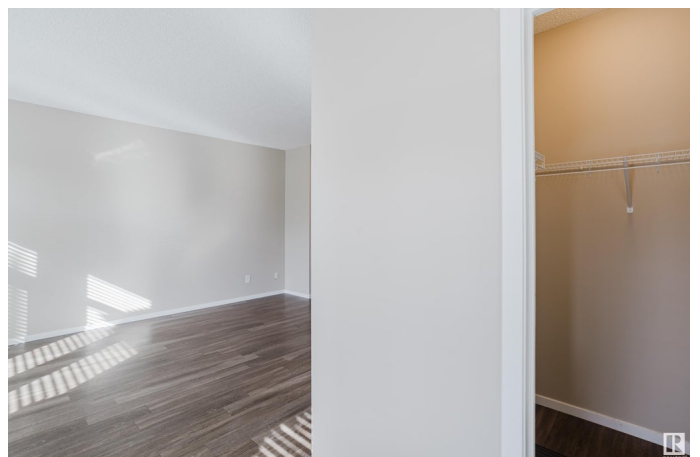
Ambleside, Edmonton, AB

Located in the heart of Ambleside, this clean, move-in-ready 2-storey detached home offers comfort, flexibility, and convenience in one of Edmonton's most desirable neighborhoods. Built in 2014 and sitting on a 325.35 sq. m. lot, it features a bright open-concept main floor, thoughtfully designed kitchen, and a fully fenced yard with a double detached garage—perfect for families, professionals, or first-time buyers. The unfinished basement presents a blank canvas to create the space that fits your lifestyle, whether it's a home gym, extra living area, or guest suite. Ambleside is known for its walkability, access to schools and parks, and close proximity to Anthony Henday, Windermere Shopping Centre, and the River Valley. If you've been looking for a well-kept home in a connected, family-friendly community, this one stands out.

Built in 2014

### Essential Information

MLS® #	E4427863
Price	\$474,900
Bedrooms	3
Bathrooms	2.50
Full Baths	2
Half Baths	1



Square Footage	1,500
Acres	0.00
Year Built	2014
Type	Single Family
Sub-Type	Detached Single Family
Style	2 Storey
Status	Active

### **Community Information**

Address	4215 Allan Link Link
Area	Edmonton
Subdivision	Ambleside
City	Edmonton
County	ALBERTA
Province	AB
Postal Code	T6W 0L2

### **Amenities**

Amenities	Air Conditioner, See Remarks
Parking	Double Garage Detached

### **Interior**

Interior Features	ensuite bathroom
Appliances	Dishwasher-Built-In, Dryer, Hood Fan, Refrigerator, Stove-Electric, Washer
Heating	Forced Air-1, Natural Gas
Fireplace	Yes
Fireplaces	See Remarks
Stories	2
Has Basement	Yes
Basement	Full, Unfinished

### **Exterior**

Exterior	Wood, Brick, Vinyl
Exterior Features	Airport Nearby, Playground Nearby, Shopping Nearby, See Remarks
Roof	Asphalt Shingles
Construction	Wood, Brick, Vinyl
Foundation	Concrete Perimeter

### **Additional Information**

Date Listed March 27th, 2025

Days on Market 8

Zoning Zone 56

DATA IS DEEMED RELIABLE BUT IS NOT GUARANTEED ACCURATE BY THE REALTORS® ASSOCIATION OF EDMONTON. COPYRIGHT 2025 BY THE REALTORS® ASSOCIATION OF EDMONTON. ALL RIGHTS RESERVED. Trademarks are owned or controlled by the Canadian Real Estate Association (CREA) and identify real estate professionals who are members of CREA (REALTOR®, REALTORS®) and/or the quality of services they provide (MLS®, Multiple Listing Service®)

Listing information last updated on April 4th, 2025 at 4:32am MDT