

# \$660,000 - 3239 Pelerin Crescent, Beaumont

MLS® #E4426325

**\$660,000**

4 Bedroom, 4.00 Bathroom, 2,130 sqft  
Single Family on 0.00 Acres

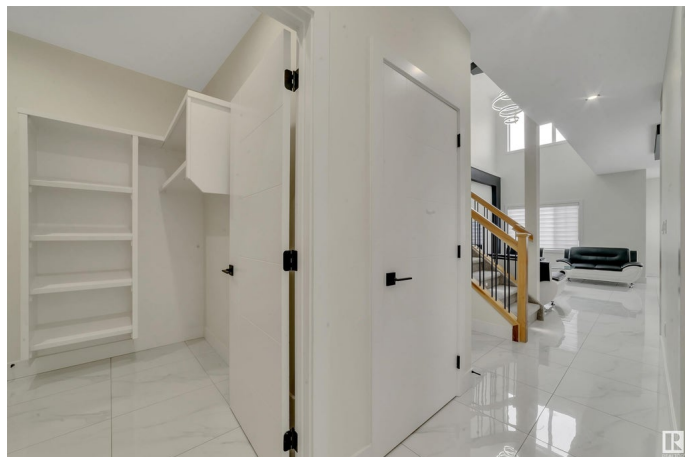
Place Chaleureuse, Beaumont, AB

2 master bedrooms, spice kitchen, open-to-below living room, main floor bedroom and bath—this modern home has it all. The home has many upgrades, including built-in appliances and both electric and gas stovetops. The main floor features an open-concept layout, 9ft ceiling with the open-to-below living room allowing natural sunlight throughout the day. It also includes a bedroom with a full bathroom. Upstairs, you will find 2 master bedrooms with ensuite bathrooms, along with a third bedroom and an additional full bathroom. The laundry room is conveniently located upstairs for easy access. The double-car garage has an epoxy-coated floor, adding durability and style. The unfinished 9ft basement provides endless possibilities for customization.

Built in 2023

## Essential Information

MLS® #	E4426325
Price	\$660,000
Bedrooms	4
Bathrooms	4.00
Full Baths	4
Square Footage	2,130
Acres	0.00
Year Built	2023



Type	Single Family
Sub-Type	Detached Single Family
Style	2 Storey
Status	Active

### **Community Information**

Address	3239 Pelerin Crescent
Area	Beaumont
Subdivision	Place Chaleureuse
City	Beaumont
County	ALBERTA
Province	AB
Postal Code	T4X 2Z1

### **Amenities**

Amenities	Carbon Monoxide Detectors, Ceiling 9 ft., Exterior Walls- 2"x6", Hot Water Instant, No Smoking Home, Television Connection, Natural Gas Stove Hookup, 9 ft. Basement Ceiling
Parking Spaces	4
Parking	Double Garage Attached

### **Interior**

Interior Features	ensuite bathroom
Appliances	Dishwasher-Built-In, Dryer, Hood Fan, Oven-Built-In, Refrigerator, Stove-Countertop Electric, Stove-Countertop Gas, Washer, Window Coverings
Heating	Forced Air-1, Natural Gas
Fireplace	Yes
Fireplaces	Tile Surround
Stories	2
Has Basement	Yes
Basement	Full, Unfinished

### **Exterior**

Exterior	Wood, Stone, Vinyl
Exterior Features	Airport Nearby, Fenced, No Back Lane
Roof	Asphalt Shingles
Construction	Wood, Stone, Vinyl
Foundation	Concrete Perimeter

## Additional Information

Date Listed March 19th, 2025

Days on Market 22

Zoning Zone 82

DATA IS DEEMED RELIABLE BUT IS NOT GUARANTEED ACCURATE BY THE REALTORS® ASSOCIATION OF EDMONTON. COPYRIGHT 2025 BY THE REALTORS® ASSOCIATION OF EDMONTON. ALL RIGHTS RESERVED. Trademarks are owned or controlled by the Canadian Real Estate Association (CREA) and identify real estate professionals who are members of CREA (REALTOR®, REALTORS®) and/or the quality of services they provide (MLS®, Multiple Listing Service®)

Listing information last updated on April 10th, 2025 at 1:32pm MDT