

Courtesy Of Joel P Teeling Of MaxWell Polaris

\$307,500 - 16934 109 Street, Edmonton

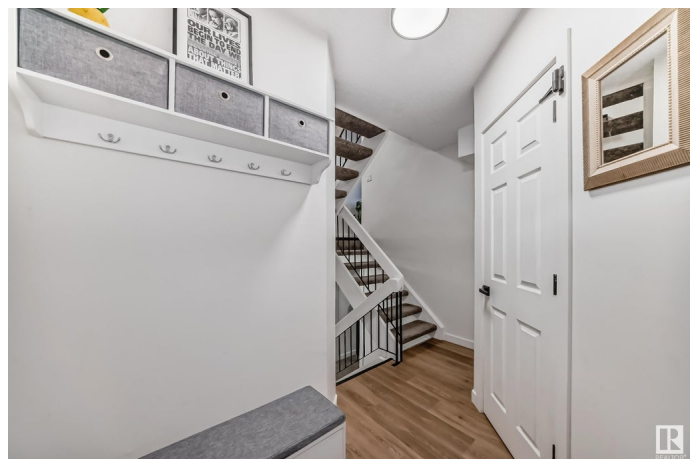
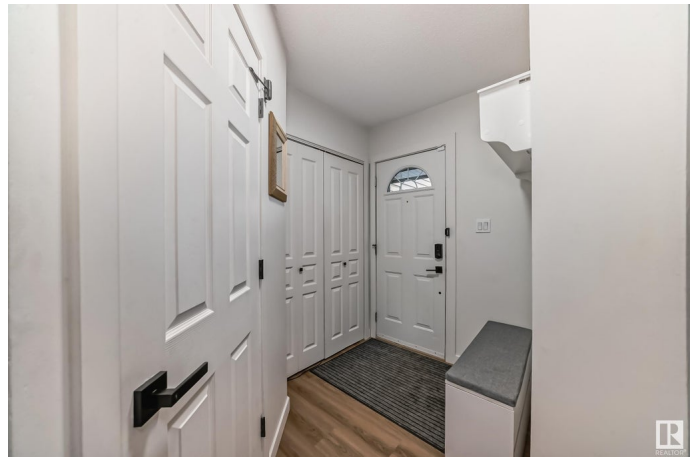
MLS® #E4425865

\$307,500

3 Bedroom, 1.50 Bathroom, 1,223 sqft
Condo / Townhouse on 0.00 Acres

Baturyn, Edmonton, AB

STEP INTO COMFORT in this BEAUTIFUL, SPACIOUS & FULLY RENOVATED townhome. Located in a small, friendly & quiet development, in the family-friendly Baturyn community, this property will be your sanctuary. Evoking images of a ski-chalet, you'll love the vibes throughout this home. Enjoy substantial upgrades like NEW FLOORING, UPGRADED KITCHEN W/ QUARTZ, BRAND NEW STAINLESS STEEL APPLIANCES, NEW PAINT, NEW LIGHT FIXTURES, NEW BATHROOM, NEW CENTRAL A/C, NEWER FURNACE & more! The layout is conducive to all lifestyles, offering 5 levels of living space. The living room is spacious & leads into the fenced backyard, which backs on to a lovely greenspace. With soaring ceilings, the living room is complimented by a beautiful fireplace. The kitchen/dining room area is large, bright & leads into a sizable balcony. Upstairs are 3 generous bedrooms, including a HUGE primary. An attached garage completes the package. Located near schools, parks & shopping, this is the perfect place for those who seek comfort & style!



Built in 1976

Essential Information

MLS® #

E4425865

Price	\$307,500
Bedrooms	3
Bathrooms	1.50
Full Baths	1
Half Baths	1
Square Footage	1,223
Acres	0.00
Year Built	1976
Type	Condo / Townhouse
Sub-Type	Townhouse
Style	5 Level Split
Status	Active

Community Information

Address	16934 109 Street
Area	Edmonton
Subdivision	Baturyn
City	Edmonton
County	ALBERTA
Province	AB
Postal Code	T5X 2J3

Amenities

Amenities	No Smoking Home, See Remarks
Parking	Single Garage Attached

Interior

Appliances	Air Conditioning-Central, Dishwasher-Built-In, Dryer, Garage Control, Garage Opener, Microwave Hood Fan, Refrigerator, Stove-Gas, Washer, See Remarks
Heating	Forced Air-1, Natural Gas
Fireplace	Yes
Fireplaces	Mantel
Stories	4
Has Basement	Yes
Basement	Full, Finished

Exterior

Exterior	Wood, Vinyl
----------	-------------

Exterior Features	Cul-De-Sac, Golf Nearby, Level Land, Low Maintenance Landscape, No Back Lane, Playground Nearby, Private Setting, Public Transportation, Schools, Shopping Nearby
Roof	Asphalt Shingles
Construction	Wood, Vinyl
Foundation	Concrete Perimeter

School Information

Elementary	BATURYN
Middle	MARY BUTTERWORTH
High	QUEEN ELIZABETH

Additional Information

Date Listed	March 14th, 2025
Days on Market	21
Zoning	Zone 27
Condo Fee	\$494

DATA IS DEEMED RELIABLE BUT IS NOT GUARANTEED ACCURATE BY THE REALTORS® ASSOCIATION OF EDMONTON. COPYRIGHT 2025 BY THE REALTORS® ASSOCIATION OF EDMONTON. ALL RIGHTS RESERVED. Trademarks are owned or controlled by the Canadian Real Estate Association (CREA) and identify real estate professionals who are members of CREA (REALTOR®, REALTORS®) and/or the quality of services they provide (MLS®, Multiple Listing Service®)

Listing information last updated on April 4th, 2025 at 12:02am MDT