

Courtesy Of Josh M Cudmore Of Initia Real Estate

\$689,800 - 15103 96 Avenue, Edmonton

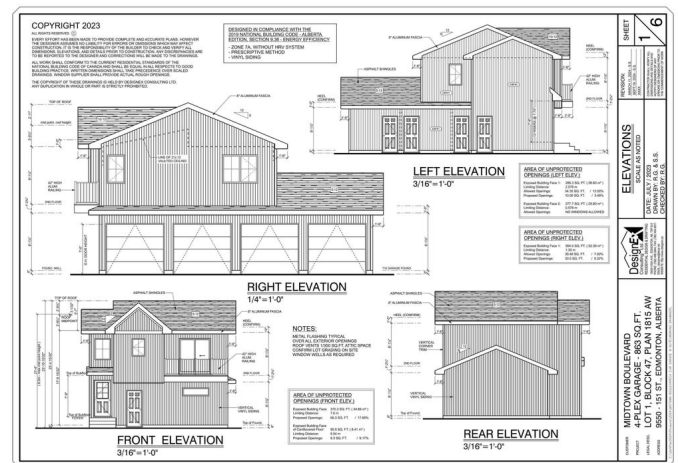
MLS® #E4425374

\$689,800

0 Bedroom, 0.00 Bathroom,
Single Family on 0.00 Acres

West Jasper Place, Edmonton, AB

Amazing Development Opportunity on this corner lot with this stunning 9 unit project that is DP & BP ready. Permits will be transferred over to the new owners. This 4plex with legal basement suites is accompanied by a garage suite to maximize your cashflow. All units are thoughtfully designed to enhance the tenants living experience. Corner units are 1330 sq ft with 3 bedrooms and the middle units are 1280 sq ft with 2 master bedrooms. The one bedroom basement suites come with their own forced walk out entrance at the front. The cherry on top is the garage suite above the 4 single car garage; a private living oasis with no shared walls. A variance was approved to accommodate larger units and sq footage. Vacant lot, old house has been demolished. It is perfectly located close to transportation, schools/parks, DT, and all your shopping needs.



Essential Information

MLS® #	E4425374
Price	\$689,800
Bathrooms	0.00
Acres	0.00
Type	Single Family
Sub-Type	Vacant Lot/Land
Style	2 Storey

Status Active

Community Information

Address 15103 96 Avenue
Area Edmonton
Subdivision West Jasper Place
City Edmonton
County ALBERTA
Province AB
Postal Code T5P 1S3

Amenities

Parking See Remarks

Exterior

Exterior Features See Remarks

Additional Information

Date Listed March 12th, 2025
Days on Market 23
Zoning Zone 22

DATA IS DEEMED RELIABLE BUT IS NOT GUARANTEED ACCURATE BY THE REALTORS® ASSOCIATION OF EDMONTON. COPYRIGHT 2025 BY THE REALTORS® ASSOCIATION OF EDMONTON. ALL RIGHTS RESERVED. Trademarks are owned or controlled by the Canadian Real Estate Association (CREA) and identify real estate professionals who are members of CREA (REALTOR®, REALTORS®) and/or the quality of services they provide (MLS®, Multiple Listing Service®)

Listing information last updated on April 4th, 2025 at 5:17am MDT