

Courtesy Of Gino Daniele Of RE/MAX Elite

# \$1,298,800 - 55227 Rge Rd 252, Rural Sturgeon County

MLS® #E4423655

**\$1,298,800**

4 Bedroom, 4.00 Bathroom, 2,651 sqft

Rural on 2.40 Acres

None, Rural Sturgeon County, AB

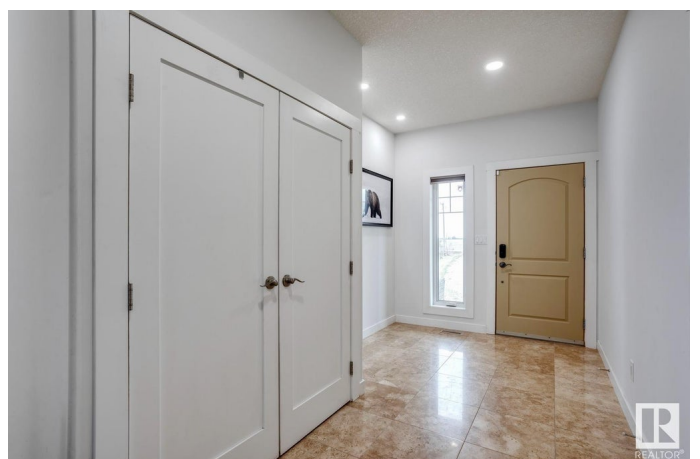
**BREATH TAKING COUNTRY ESTATE!** This custom Executive 2 storey with CITY SERVICES sitting on 2.4 acres is **STUNNING!** Featuring exquisite upgrades, including triple pane windows, Travertine tile, hardwood, new furnace (2023), pressure pump (2024) & the entire home has spray foam insulation. The main floor has soaring cathedral ceilings with a chef's dream kitchen, granite counters, high end appliances, 6 burner gas stove, pot filler, built in fridge/freezer & island with eating bar. The living room has massive windows with spectacular views! The main floor is completed with a luxury primary suite with spa-like ensuite, bedroom, den, laundry & bath. Upstairs are 2 bedrooms & full bath. The basement with 10 ft ceilings is great for entertaining with a full bar, beverage cooler, dishwasher, amazing Theatre room with raised seating & surround sound, bedroom & bath. The exterior has Hardy Board siding, traditional veranda, 5 car garage & backyard oasis that is second to none! Only 10 mins to St. Albert. **GEORGEIOUS!**

Built in 2011

## Essential Information

MLS® # E4423655

Price \$1,298,800



Bedrooms	4
Bathrooms	4.00
Full Baths	4
Square Footage	2,651
Acres	2.40
Year Built	2011
Type	Rural
Sub-Type	Detached Single Family
Style	2 Storey
Status	Active

### **Community Information**

Address	55227 Rge Rd 252
Area	Rural Sturgeon County
Subdivision	None
City	Rural Sturgeon County
County	ALBERTA
Province	AB
Postal Code	T8R 0P9

### **Amenities**

Features	Ceiling 9 ft., Vaulted Ceiling
----------	--------------------------------

### **Interior**

Interior Features	ensuite bathroom
Heating	Forced Air-1, Natural Gas
Stories	3
Has Basement	Yes
Basement	Full, Finished

### **Exterior**

Exterior	Wood
Exterior Features	Golf Nearby, Landscaped, Schools, Shopping Nearby, See Remarks
Construction	Wood
Foundation	Concrete Perimeter

### **Additional Information**

Date Listed	March 3rd, 2025
Days on Market	11

## Zoning

## Zone 60

DATA IS DEEMED RELIABLE BUT IS NOT GUARANTEED ACCURATE BY THE REALTORS® ASSOCIATION OF EDMONTON. COPYRIGHT 2025 BY THE REALTORS® ASSOCIATION OF EDMONTON. ALL RIGHTS RESERVED. Trademarks are owned or controlled by the Canadian Real Estate Association (CREA) and identify real estate professionals who are members of CREA (REALTOR®, REALTORS®) and/or the quality of services they provide (MLS®, Multiple Listing Service®)

Listing information last updated on March 14th, 2025 at 1:32pm MDT