

# \$275,500 - 2538 63 Ave, Rural Leduc County

MLS® #E4422613

**\$275,500**

0 Bedroom, 0.00 Bathroom,  
Rural on 0.10 Acres

Churchill Meadow, Rural Leduc County, AB

An incredible opportunity to build your dream home on 32 pocket lot in the desirable Churchill Meadows community. Choose your preferred builder, and weâ€™™ help bring your vision to life. Located near Diamond Estate and Lucas Estate, this rapidly growing neighborhood offers both a peaceful atmosphere and the charm of luxury living. Experience the perfect balance of a thriving community and serene surroundings.

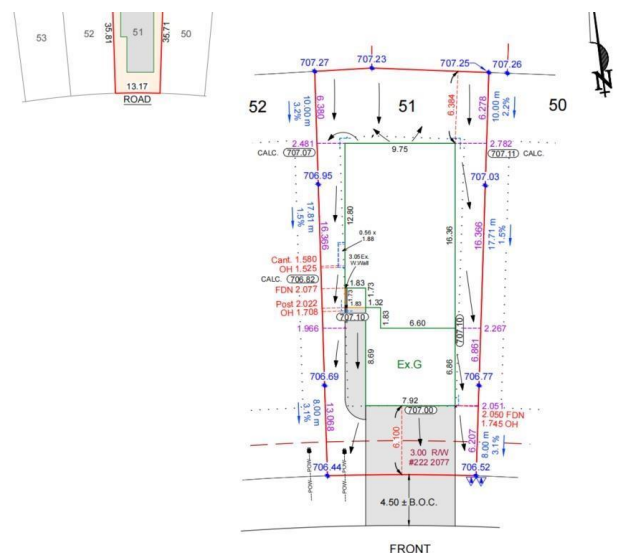


## Essential Information

MLS® #	E4422613
Price	\$275,500
Bathrooms	0.00
Acres	0.10
Type	Rural
Sub-Type	Vacant Lot/Land
Status	Active

## Community Information

Address	2538 63 Ave
Area	Rural Leduc County
Subdivision	Churchill Meadow
City	Rural Leduc County
County	ALBERTA
Province	AB
Postal Code	T4X 3A4



## Exterior

Exterior Features    Airport Nearby

## Additional Information

Date Listed            February 23rd, 2025

Days on Market      44

Zoning                 Zone 80

DATA IS DEEMED RELIABLE BUT IS NOT GUARANTEED ACCURATE BY THE REALTORS® ASSOCIATION OF EDMONTON. COPYRIGHT 2025 BY THE REALTORS® ASSOCIATION OF EDMONTON. ALL RIGHTS RESERVED. Trademarks are owned or controlled by the Canadian Real Estate Association (CREA) and identify real estate professionals who are members of CREA (REALTOR®, REALTORS®) and/or the quality of services they provide (MLS®, Multiple Listing Service®)

Listing information last updated on April 8th, 2025 at 2:02pm MDT