

Courtesy Of Bobby V Jaswal Of Initia Real Estate

\$0 - 101 16220 Stony Plain Road, Edmonton

MLS® #E4422064

\$0

0 Bedroom, 0.00 Bathroom,
Retail on 0.00 Acres

Britannia Youngstown, Edmonton, AB

1500sf- 7000sf SPACE AVAILABLE IN THIS BUILDING. MAIN FLOOR & UPPER FLOOR PERFECT FOR DAY CARE /SPAS , ALSO UPPER FLOOR 2ND BAY AVAILABLE FOR PROFESSIONAL SERVICES, ANOTHER BAY ON THE MAIN FLOOR SUITABLE FOR RESTAURANTS, CAFES, FRANCHISE AND MANY OTHER OPTIONS. IT IS SURROUNDED BY A LOT OF RESIDENCE AREA AND CLOSE TO MAYFIELD AND WEST EDMONTON MALL.

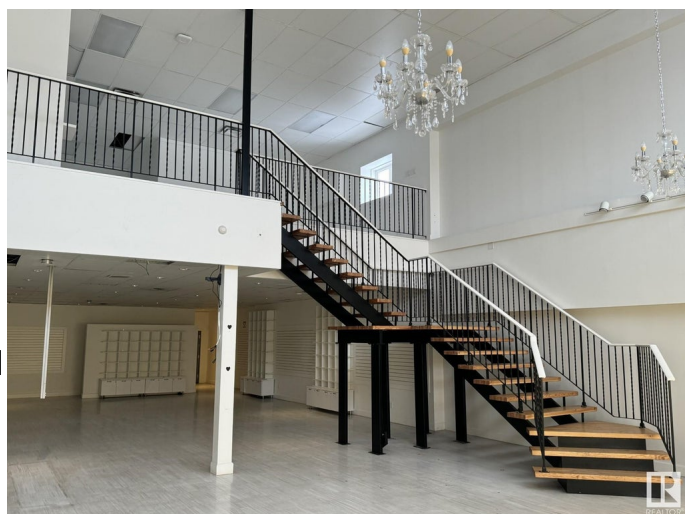
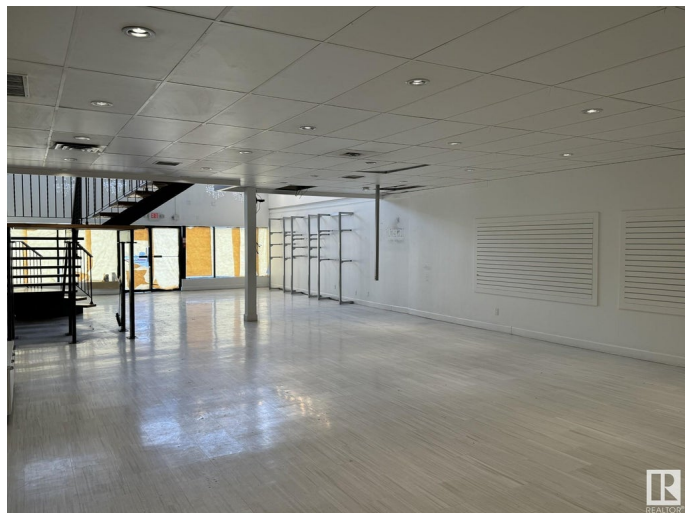
Built in 1986

Essential Information

| | |
|------------|----------|
| MLS® # | E4422064 |
| Bathrooms | 0.00 |
| Acres | 0.00 |
| Year Built | 1986 |
| Type | Retail |
| Status | Active |

Community Information

| | |
|-------------|----------------------------|
| Address | 101 16220 Stony Plain Road |
| Area | Edmonton |
| Subdivision | Britannia Youngstown |
| City | Edmonton |
| County | ALBERTA |
| Province | AB |



Postal Code T5P 4A4

Exterior

Exterior See Remarks

Construction See Remarks

Additional Information

Date Listed February 19th, 2025

Days on Market 52

Zoning Zone 21

DATA IS DEEMED RELIABLE BUT IS NOT GUARANTEED ACCURATE BY THE REALTORS® ASSOCIATION OF EDMONTON. COPYRIGHT 2025 BY THE REALTORS® ASSOCIATION OF EDMONTON. ALL RIGHTS RESERVED. Trademarks are owned or controlled by the Canadian Real Estate Association (CREA) and identify real estate professionals who are members of CREA (REALTOR®, REALTORS®) and/or the quality of services they provide (MLS®, Multiple Listing Service®)

Listing information last updated on April 12th, 2025 at 5:09am MDT