

Courtesy Of Don Boonstra Of 2% Realty Pro

\$255,000 - 108 16035 132 Street, Edmonton

MLS® #E4421341

\$255,000

2 Bedroom, 2.00 Bathroom, 1,070 sqft
Condo / Townhouse on 0.00 Acres

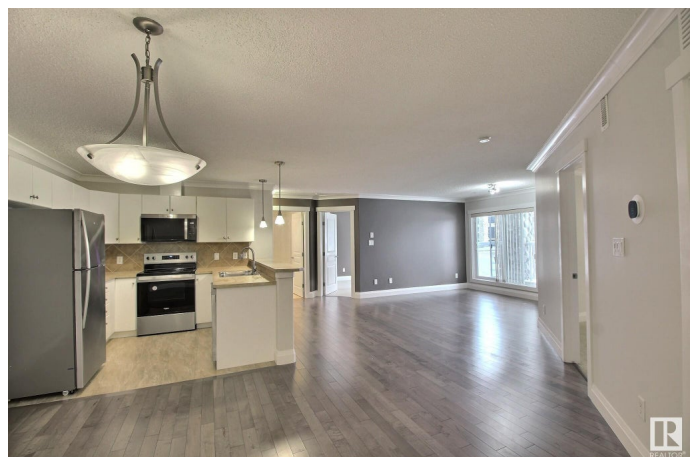
Oxford, Edmonton, AB

Welcome to this upgraded unit within Oxford Bay! This stylish 2-bedroom plus den unit offers a contemporary open layout featuring brand-new stainless steel appliances, maple hardwood flooring, fresh paint and ceramic tile throughout the living spaces. Additional highlights include air conditioning, in-suite laundry, a corner gas fireplace, and a titled parking stall. The well-managed complex boasts fantastic amenities, including a fully equipped exercise room, games room, social room, theatre room, and a top-floor patio. Outside, relax in the beautifully landscaped area with a charming gazebo and lake views. Plenty of visitor parking available, with city transit and public services nearby. Note that some photos have virtual staging to help in imagining the space.

Built in 2005

Essential Information

MLS® #	E4421341
Price	\$255,000
Bedrooms	2
Bathrooms	2.00
Full Baths	2
Square Footage	1,070
Acres	0.00
Year Built	2005



Type	Condo / Townhouse
Sub-Type	Lowrise Apartment
Style	Single Level Apartment
Status	Active

Community Information

Address	108 16035 132 Street
Area	Edmonton
Subdivision	Oxford
City	Edmonton
County	ALBERTA
Province	AB
Postal Code	T6V 0B4

Amenities

Amenities	Air Conditioner, Exercise Room, Gazebo, Parking-Visitor, Party Room, Patio, Smart/Program. Thermostat, Social Rooms, Storage-In-Suite, See Remarks, Storage Cage, Natural Gas BBQ Hookup, Rooftop Deck/Patio
Parking Spaces	1
Parking	Parkade
Is Waterfront	Yes

Interior

Interior Features	ensuite bathroom
Appliances	Dishwasher-Built-In, Oven-Microwave, Refrigerator, Stacked Washer/Dryer, Stove-Electric, Window Coverings
Heating	Forced Air-1, Natural Gas
# of Stories	4
Stories	4
Has Basement	Yes
Basement	None, No Basement

Exterior

Exterior	Wood, Stone, Vinyl
Exterior Features	Backs Onto Lake, Landscaped, Playground Nearby, Schools, Shopping Nearby, See Remarks
Roof	Asphalt Shingles
Construction	Wood, Stone, Vinyl
Foundation	Concrete Perimeter

Additional Information

Date Listed February 13th, 2025

Days on Market 57

Zoning Zone 27

Condo Fee \$697

DATA IS DEEMED RELIABLE BUT IS NOT GUARANTEED ACCURATE BY THE REALTORS® ASSOCIATION OF EDMONTON. COPYRIGHT 2025 BY THE REALTORS® ASSOCIATION OF EDMONTON. ALL RIGHTS RESERVED. Trademarks are owned or controlled by the Canadian Real Estate Association (CREA) and identify real estate professionals who are members of CREA (REALTOR®, REALTORS®) and/or the quality of services they provide (MLS®, Multiple Listing Service®)

Listing information last updated on April 11th, 2025 at 6:32am MDT