

## \$0 - 11325 163 Street, Edmonton

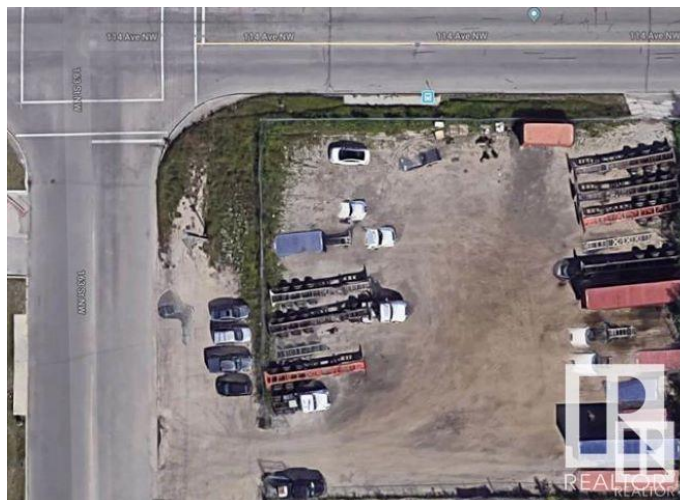
MLS® #E4421103

**\$0**

0 Bedroom, 0.00 Bathroom,  
Land Commercial on 0.00 Acres

Sheffield Industrial, Edmonton, AB

Property Details: Size: Approximately 31,000 square feet Type: Industrial land Location: High traffic area, corner location Features: Fenced and gravelled Lease Details: 36 months/negotiable Monthly Lease: \$4,500.00 Huge potential on this industrial land for lease. This property's high traffic location and corner positioning could be advantageous for businesses needing visibility and accessibility. The landlord is willing to split the space between 2 tenants. A fence can be placed down the middle of the lot.



### Essential Information

MLS® #	E4421103
Bathrooms	0.00
Acres	0.00
Type	Land Commercial
Status	Active

### Community Information

Address	11325 163 Street
Area	Edmonton
Subdivision	Sheffield Industrial
City	Edmonton
County	ALBERTA
Province	AB
Postal Code	T5M 1Y7

**Additional Information**

Date Listed	February 10th, 2025
Days on Market	70
Zoning	Zone 40

DATA IS DEEMED RELIABLE BUT IS NOT GUARANTEED ACCURATE BY THE REALTORS® ASSOCIATION OF EDMONTON. COPYRIGHT 2025 BY THE REALTORS® ASSOCIATION OF EDMONTON. ALL RIGHTS RESERVED.Trademarks are owned or controlled by the Canadian Real Estate Association (CREA) and identify real estate professionals who are members of CREA (REALTOR®, REALTORS®) and/or the quality of services they provide (MLS®, Multiple Listing Service®)

Listing information last updated on April 21st, 2025 at 12:47am MDT