

Courtesy Of Christian Jones Of RE/MAX Excellence

\$5,940,480 - 23440/23441 114 Avenue, Rural Parkland County

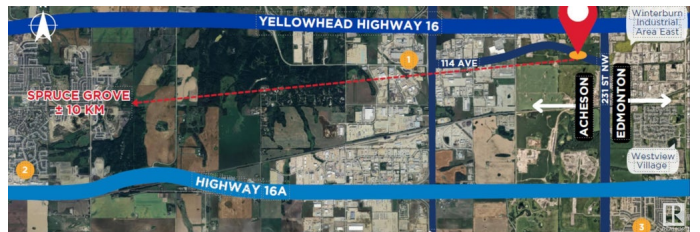
MLS® #E4418317

\$5,940,480

0 Bedroom, 0.00 Bathroom,
Industrial on 0.00 Acres

Acheson Industrial, Rural Parkland County, AB

76.16 Acres. The Acheson advantage with the proximity of Edmonton! This potential industrial development site is strategically located within the Parkland County Acheson Industrial Area Structure Plan (ASP), and offers excellent access to key transportation routes. It provides quick access to Yellowhead Highway 16, and is just minutes from Anthony Henday, enhancing business connectivity. The site only a short drive from the vast amenities of Edmonton and Spruce Grove Alberta while also being strategically nestled in Acheson, Alberta. With a central location and access to surrounding infrastructure, this site presents prime potential for future industrial development. 4;26;53;11;NE (Southern Portion) Zoning: Industrial Reserve District (IRD).



Built in 2024

Essential Information

MLS® #	E4418317
Price	\$5,940,480
Bathrooms	0.00
Acres	0.00
Year Built	2024
Type	Industrial

Status Active

Community Information

Address 23440/23441 114 Avenue
Area Rural Parkland County
Subdivision Acheson Industrial
City Rural Parkland County
County ALBERTA
Province AB
Postal Code T5S 2E8

Exterior

Exterior See Remarks
Construction See Remarks

Additional Information

Date Listed January 15th, 2025
Days on Market 86
Zoning Zone 70

DATA IS DEEMED RELIABLE BUT IS NOT GUARANTEED ACCURATE BY THE REALTORS® ASSOCIATION OF EDMONTON. COPYRIGHT 2025 BY THE REALTORS® ASSOCIATION OF EDMONTON. ALL RIGHTS RESERVED. Trademarks are owned or controlled by the Canadian Real Estate Association (CREA) and identify real estate professionals who are members of CREA (REALTOR®, REALTORS®) and/or the quality of services they provide (MLS®, Multiple Listing Service®)

Listing information last updated on April 11th, 2025 at 7:02pm MDT