

# \$129,900 - Twp 535 Rr 41, Rural Lac Ste. Anne County

MLS® #E4417890

**\$129,900**

0 Bedroom, 0.00 Bathroom,  
Rural on 4.99 Acres

None, Rural Lac Ste. Anne County, AB

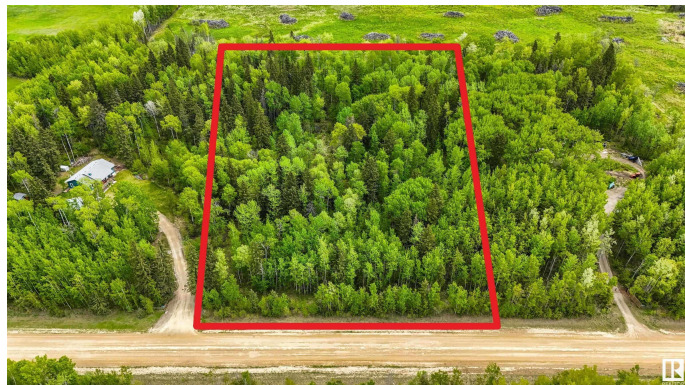
**BUILD YOUR DREAM!** Welcome to this peaceful property, located mere minutes from Wabamun. If you're looking for the perfect place to build your DREAM HOME, featuring 4.99 acres, where nature is everywhere you turn, you've found it. Gas & Power are both available at the property line, so bring your ideas and start building the home of your dreams. If location is important to you, you will love being a short drive from the charming community of Wabamun. You'll also appreciate being moments away from Highway 16, making a commute to Spruce Grove, Stony Plain or Edmonton within reach. Don't delay, come have a look at this property today!

## Essential Information

|           |                 |
|-----------|-----------------|
| MLS® #    | E4417890        |
| Price     | \$129,900       |
| Bathrooms | 0.00            |
| Acres     | 4.99            |
| Type      | Rural           |
| Sub-Type  | Vacant Lot/Land |
| Status    | Active          |

## Community Information

|         |                            |
|---------|----------------------------|
| Address | Twp 535 Rr 41              |
| Area    | Rural Lac Ste. Anne County |



|             |                            |
|-------------|----------------------------|
| Subdivision | None                       |
| City        | Rural Lac Ste. Anne County |
| County      | ALBERTA                    |
| Province    | AB                         |
| Postal Code | T0E 2K0                    |

### **Exterior**

Exterior Features Private Setting, Treed Lot, See Remarks

### **Additional Information**

Date Listed January 13th, 2025

Days on Market 60

Zoning Zone 70

DATA IS DEEMED RELIABLE BUT IS NOT GUARANTEED ACCURATE BY THE REALTORS® ASSOCIATION OF EDMONTON. COPYRIGHT 2025 BY THE REALTORS® ASSOCIATION OF EDMONTON. ALL RIGHTS RESERVED. Trademarks are owned or controlled by the Canadian Real Estate Association (CREA) and identify real estate professionals who are members of CREA (REALTOR®, REALTORS®) and/or the quality of services they provide (MLS®, Multiple Listing Service®)

Listing information last updated on March 14th, 2025 at 1:32am MDT