

# \$456,000 - 23219 On Twp 554 A 1/2 Mile West Of Hwy 28a, Gibbons

MLS® #E4412916

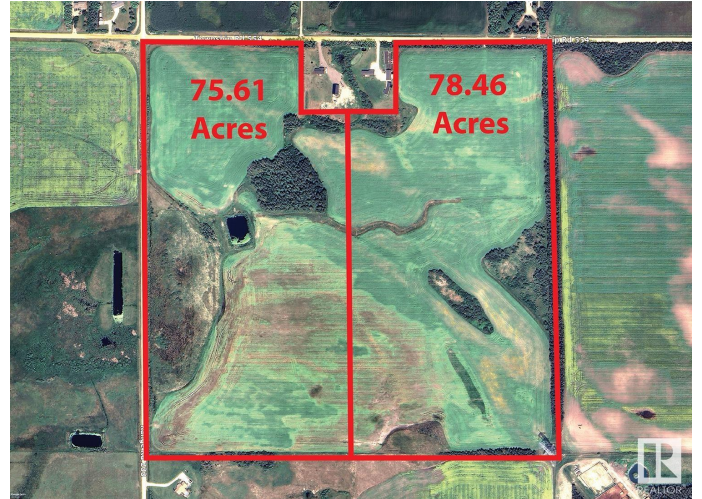
**\$456,000**

0 Bedroom, 0.00 Bathroom,  
Land Commercial on 0.00 Acres

None, Gibbons, AB

The Land is made up of 2 parcels: West:  
75.61 Acres: \$439,000 East: 78.46 Acres:  
\$456,000 TOTAL: 154.07Acres for \$895,000

Features: - Note: these parcels may be purchased separately or both together. -Inside Edmonton-Gibbons Land Corridor ! -Close to Industrial Heartland and Edmonton. Great for Country Residential Estate or Hobby Farm Development or add to existing farm holdings ! -1/2 mile from Major Highway between Edmonton and Fort McMurray !! -Great Road Access from all directions !



## Essential Information

|           |                 |
|-----------|-----------------|
| MLS® #    | E4412916        |
| Price     | \$456,000       |
| Bathrooms | 0.00            |
| Acres     | 0.00            |
| Type      | Land Commercial |
| Status    | Active          |

## Community Information

|             |                             |
|-------------|-----------------------------|
| Address     | 23219 On Twp 554 A 1/2 Mile |
| Area        | Gibbons                     |
| Subdivision | None                        |
| City        | Gibbons                     |

County ALBERTA  
Province AB  
Postal Code T0A 1N0

### **Additional Information**

Date Listed November 6th, 2024  
Days on Market 150  
Zoning Zone 60

DATA IS DEEMED RELIABLE BUT IS NOT GUARANTEED ACCURATE BY THE REALTORS® ASSOCIATION OF EDMONTON. COPYRIGHT 2025 BY THE REALTORS® ASSOCIATION OF EDMONTON. ALL RIGHTS RESERVED. Trademarks are owned or controlled by the Canadian Real Estate Association (CREA) and identify real estate professionals who are members of CREA (REALTOR®, REALTORS®) and/or the quality of services they provide (MLS®, Multiple Listing Service®)

Listing information last updated on April 5th, 2025 at 3:02pm MDT