

# \$499,900 - 9621 101 Street, Edmonton

MLS® #E4383383

**\$499,900**

1 Bedroom, 3.00 Bathroom, 1,260 sqft  
Single Family on 0.00 Acres

Rossdale, Edmonton, AB

Infill lot in the desirable neighborhood of Rossdale with view of Legislature Building. Could be renovated to maintain a livable home. Has Jacuzzi and Sauna. Available for quick possession. Zoned for infills, and can accommodate a duplex or front to back 4-plex.

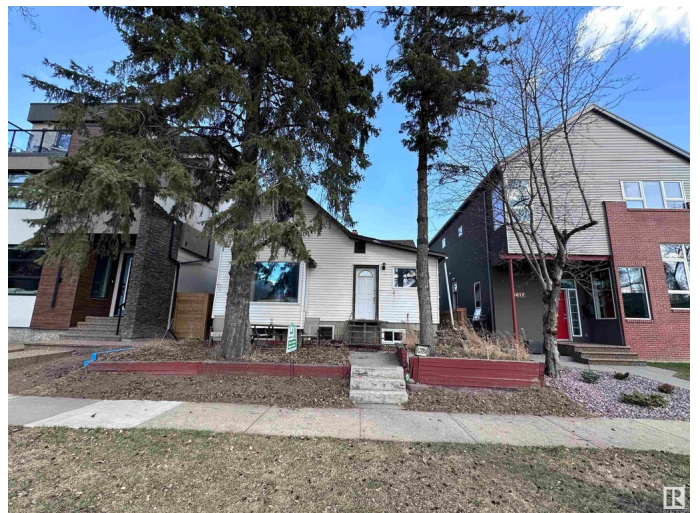
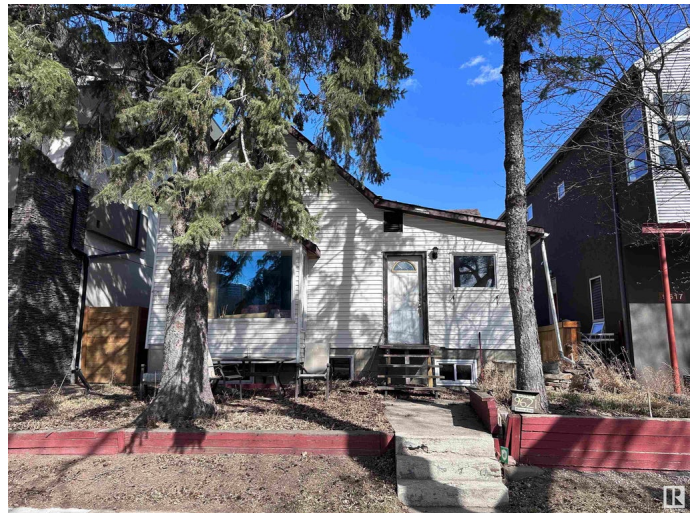
Built in 1910

## Essential Information

MLS® #	E4383383
Price	\$499,900
Bedrooms	1
Bathrooms	3.00
Full Baths	3
Square Footage	1,260
Acres	0.00
Year Built	1910
Type	Single Family
Sub-Type	Detached Single Family
Style	2 Storey
Status	Active

## Community Information

Address	9621 101 Street
Area	Edmonton
Subdivision	Rossdale
City	Edmonton



County	ALBERTA
Province	AB
Postal Code	T5K 0W7

### **Amenities**

Amenities	On Street Parking
Parking Spaces	3
Parking	Single Garage Detached

### **Interior**

Interior Features	ensuite bathroom
Appliances	None
Heating	Forced Air-1, Natural Gas
Stories	3
Has Basement	Yes
Basement	Full, Finished

### **Exterior**

Exterior	Wood, Vinyl
Exterior Features	Back Lane, Environmental Reserve, Fenced, Flat Site, Level Land, Paved Lane, Playground Nearby, Private Setting, Schools, Shopping Nearby, Ski Hill Nearby
Roof	Asphalt Shingles
Construction	Wood, Vinyl
Foundation	Concrete Perimeter

### **Additional Information**

Date Listed	April 21st, 2024
Days on Market	351
Zoning	Zone 12

DATA IS DEEMED RELIABLE BUT IS NOT GUARANTEED ACCURATE BY THE REALTORS® ASSOCIATION OF EDMONTON. COPYRIGHT 2025 BY THE REALTORS® ASSOCIATION OF EDMONTON. ALL RIGHTS RESERVED. Trademarks are owned or controlled by the Canadian Real Estate Association (CREA) and identify real estate professionals who are members of CREA (REALTOR®, REALTORS®) and/or the quality of services they provide (MLS®, Multiple Listing Service®)

Listing information last updated on April 6th, 2025 at 11:02pm MDT