

\$2,960,000 - 55506 Rge Rd 222, Rural Sturgeon County

MLS® #E4379793

\$2,960,000

0 Bedroom, 0.00 Bathroom,
Land Commercial on 0.00 Acres

None, Rural Sturgeon County, AB

80 Acres of flat and dry Heavy Industrial (IHH) land in the Sturgeon Industrial Heartland. Part of a 320 acre offering immediately adjacent to the Cando Rail Terminal expansion. See MLS E4383273 (80 acres) and MLS E4379791 (160 acres). One mile east of Hwy 825. Older residence and small yard site on this quarter.

Built in 1969

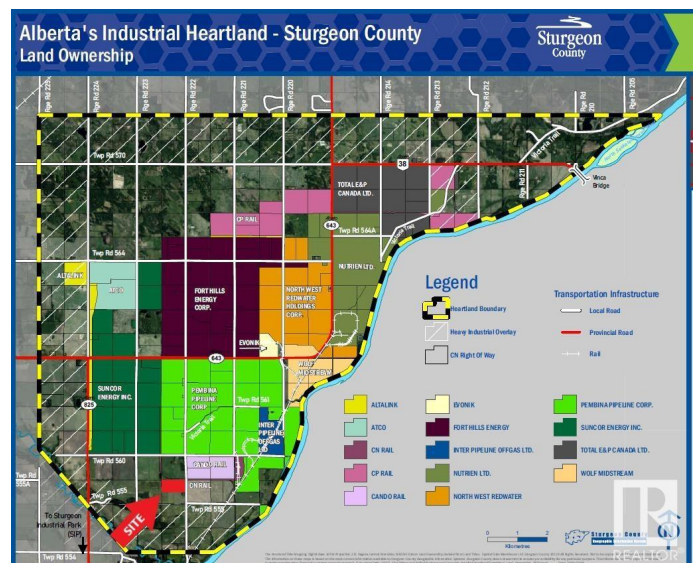
Essential Information

MLS® #	E4379793
Price	\$2,960,000
Bathrooms	0.00
Acres	0.00
Year Built	1969
Type	Land Commercial
Status	Active

Community Information

Address	55506 Rge Rd 222
Area	Rural Sturgeon County
Subdivision	None
City	Rural Sturgeon County
County	ALBERTA
Province	AB
Postal Code	T0A 1N1

Exterior



Exterior See Remarks
Construction See Remarks

Additional Information

Date Listed April 2nd, 2024
Days on Market 380
Zoning Zone 60

DATA IS DEEMED RELIABLE BUT IS NOT GUARANTEED ACCURATE BY THE REALTORS® ASSOCIATION OF EDMONTON. COPYRIGHT 2025 BY THE REALTORS® ASSOCIATION OF EDMONTON. ALL RIGHTS RESERVED. Trademarks are owned or controlled by the Canadian Real Estate Association (CREA) and identify real estate professionals who are members of CREA (REALTOR®, REALTORS®) and/or the quality of services they provide (MLS®, Multiple Listing Service®)

Listing information last updated on April 16th, 2025 at 11:17pm MDT